

ELKO EP, s.r.o.
 Palackého 493
 769 01 Holešov, Vsetuly
 Czech Republic
 Tel.: +420 573 514 211
 e-mail: elko@elkoep.com
 www.elkoep.com

Made in Czech Republic

02-6/2017 Rev.: 1



MR-41 MR-42

Memory relay

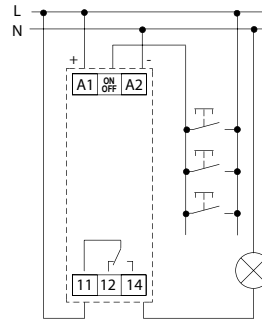


Characteristics

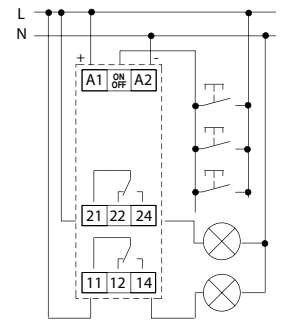
- memory (impulse) relays, for switching lights from several places, replace three-way switches (No.6) and cross-bar switches (No.7)
- thanks to control by push buttons (unlimited number, connected in parallel by 2-wires), installation gets more transparent and faster for mounting
- relays MR-41 and MR-42 memorize its state after re-energization in a way that it is always switched off, after energization it automatically returns into its state before de-energization
- MR-41 - output contact: 1x changeover / SPDT 16 A
- MR-42 - choice: 2x parallel contact or second step relay
 - the function is selected with a switch on the front panel
 - output contact: 2x changeover / DPDT 16 A
- supply voltage: AC 230V or AC/DC 12-240V

Connection

MR-41

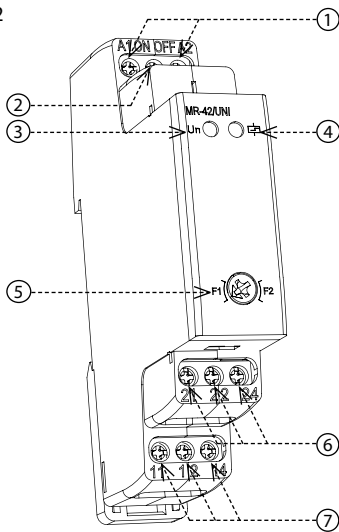


MR-42



Description

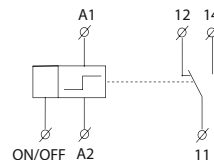
MR-42



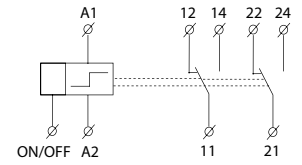
1. Supply voltage terminals
2. Control input (ON/OFF)
3. Supply voltage indication
4. Output indication
5. Function settings
6. Output contacts 2
7. Output contacts 1

Symbol

MR-41



MR-42



Type of load	$\cos \varphi \geq 0.95$								
Mat. contacts AgSnO ₂ contact 16A	250V / 16A	250V / 5A	250V / 3A	230V / 3A (690VA)	230V / 3A (690VA) to max. input C=14uF	1000W	x	250V / 3A	x
Type of load									
Mat. contacts AgSnO ₂ contact 16A	x	250V / 6A	250V / 6A	24V / 10A	24V / 3A	24V / 2A	24V / 6A	24V / 2A	x

MR-41 MR-42

Number of functions:	1	2
Supply terminals:	A1 - A2	
Voltage range:	AC/DC 12 - 240 V (AC 50 - 60 Hz)	
Power input (max.):	AC 0.17 - 3 VA / DC 0.1 - 1.2 W	AC 0.17 - 12 VA / DC 0.11 - 1.9 W
Voltage range:	AC 230 V / 50 - 60 Hz	
Power input (max.):	AC max. 12 VA / 1.2 W	AC max. 12 VA / 1.9 W
Max. dissipated power (Un + terminals):	3 W	4.5 W
Supply voltage tolerance:	-15 %; +10 %	
Supply indication:	green LED	

Output

Number of contacts:	1x changeover / SPDT (AgSnO ₂)	2x changeover / DPDT (AgSnO ₂)
Current rating:	16 A / AC1	
Breaking capacity:	4000 VA / AC1, 384 W / DC	
Inrush current:	30 A / < 3 s	
Switching voltage:	250 V AC / 24 V DC	
Output indication:	red LED	
Mechanical life:	10.000.000 operations	
Electrical life (AC1):	50.000 operations	

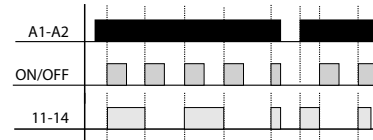
Control

Load between A2-ON/OFF:	Yes
Control. terminals:	A1 - ON/OFF
Glow tubes connetions:	No (UNI), Yes (230 V) max. - 4 pcs
Impulse length:	min. 25 ms / max. unlimited

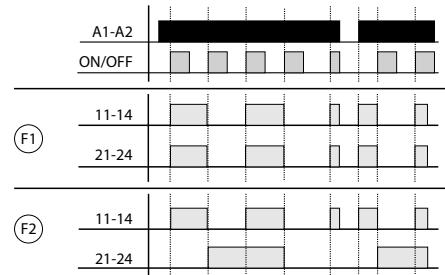
Other information

Operating temperature:	-20.. +55 °C	
Storage temperature:	-30.. +70 °C	
Dielectric strength:	supply - output 1	4 kV
	supply - output 2	3 kV
	output 1 - output 2	4 kV
Operating position:	any	
Mounting:	DIN rail EN 60715	
Protection degree:	IP40 from front panel / IP20 terminals	
Overvoltage category:	III.	
Pollution degree:	2	
Max. cable size (mm ²):	solid wire max. 1x 2.5 or 2x 1.5 / with sleeve max. 1x 2.5 (AWG 12)	
Dimensions:	90 x 17.6 x 64 mm (3.5" x 0.7" x 2.5")	
	Weight:	(UNI) - 59 g (UNI) - 80 g (230) - 53 g (230) - 70g
Standards:	EN 60669-1, EN 60669-2-1	

MR-41



MR-42



LED indication

MR-42

State of output contacts		Indication diagram (red LED)
	1 Closed contact (11 - 14)	
	2 Closed contact (21 - 24)	
	1,2 Closed contacts (11 - 14) (21 - 24)	

Warning

The device is constructed for 1-phase main installation of AC 230V or AC/DC 12-240 V and must be installed in accordance with regulations and standards applicable in the country of use. Installation, connection, setting and servicing should be installed by qualified electrician staff only, who has learnt these instruction and functions of the device. This device contains protection against overvoltage peaks and disturbances in supply. For correct function of the protection of this device there must be suitable protections of higher degree (A, B, C) installed in front of them. According to standards elimination of disturbances must be ensured. Before installation the main switch must be in position "OFF" and the device should be de-energized. Don't install the device to sources of excessive electro-magnetic interference. By correct installation ensure ideal air circulation so in case of permanent operation and higher ambient temperature the maximal operating temperature of the device is not exceeded. For installation and setting use screw-driver cca 2 mm. The device is fully-electronic - installation should be carried out according to this fact. Non-problematic function depends also on the way of transportation, storing and handling. In case of any signs of destruction, deformation, non-function or missing part, don't install and claim at your seller t is possible to dismount the device after its lifetime, recycle, or store in protective dump.